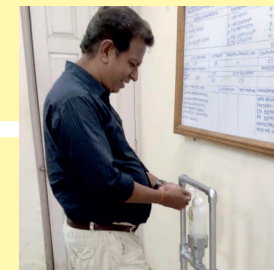
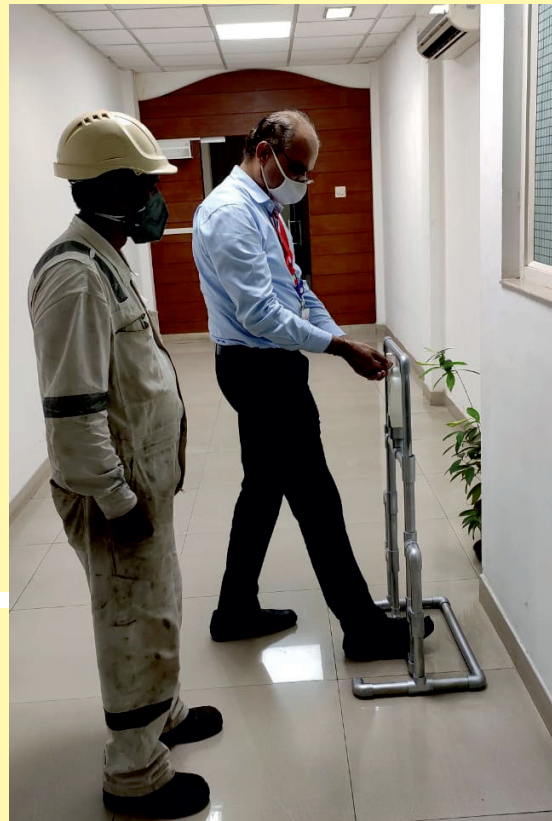


Break the chain

Sanitising hands is the new normal after the COVID lockdown. Mechanical Maintenance 1 team of U&M Department has come up novel idea to facilitate hand sanitisers with foot pedal type to support other departments. The team made the stands from the scrap materials without disturbing their timelines. The stand were made available at following areas.

1.Directors office 2.Business Development office
3.S&F Office 4.North gate office 5.Medical centre
6.U&M office 7.PFSO Office 8.South gate office
9.Company secretariat Office 10.Canteen 11.Finance
12.Training Institute



Cover page: Painting by **Ms. Thamanna M.S.**, class 5 student of Bhavans Vidya Mandir, Girinagar, daughter of Sijar M.B., Code No. 3467 of the company



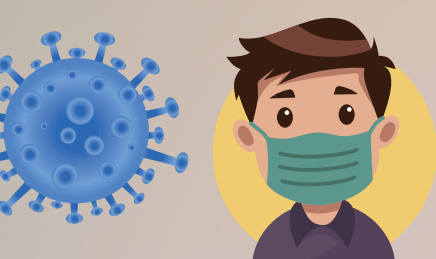
Cochin Shipyard Limited

NORMS TO BE FOLLOWED FOR PREVENTING CORONA VIRUS

At Entrance CSL



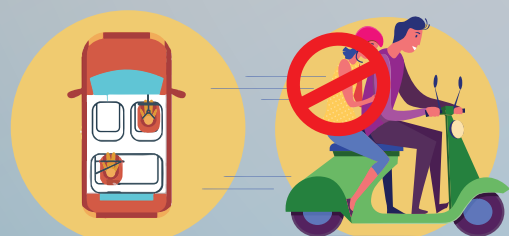
Stand on social distancing norm at the gate / punching booth



Use of Mask is Mandatory



Allow the medical staff to scan your body temperature

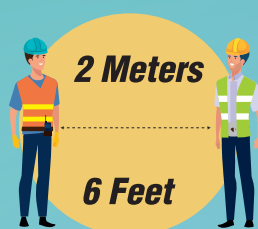


No pillion rider on 2-wheeler and only two persons in 4-wheeler apart from driver.



Wash / Sanitize Your Hands

While in CSL



Always maintain social distancing



Not more than 2 persons shall be allowed to travel in lifts.



Ensure social distancing at cafeteria / canteen / mess



Tool box talks to be conducted as per social distancing norms

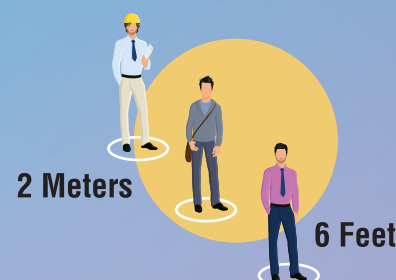


Gathering or meetings of 10 or more people to be discouraged.

At Exit



Wash / Sanitize Your Hands



Stand on social distancing norm at the gate/punching booth

Guidelines for strict compliance to create COVID-19 resilient work place

- Day - to - day GOVT/DISTRICT ADMINISTRATION norms shall be followed.
- Cochin shipyard Standard Operating Procedure (SOP) for work resumption to be READ AND UNDERSTOOD by all. An UNDERTAKING to this effect shall be signed (in prescribed format) and submitted to CHIEF SAFETY OFFICER by all reporting for work through their Supervisor/Officer.
- People with FEVER, COLD or COUGH shall NOT enter Cochin shipyard.
- FACE MASK shall be worn from the time you step out of your home for work and shall be worn till you get back home.
- Carrying HANDBAGS / BACKPACKS to Cochin shipyard shall NOT be permitted to improve your personal hygiene. Daily washed (using soap) cloth bags may be used in case of essential requirement.
- WASH HANDS using soap frequently. Wash/sanitise hands at CSL entry gate.
- Maintain SOCIAL DISTANCING norm at the gate / punching booths / work places.
- Allow to scan your BODY TEMPERATURE at the entry gate.
- NO PILLION RIDER is allowed on 2-wheelers.
- ONLY TWO persons are allowed to travel in FOUR WHEELER apart from the driver.
- All are encouraged to use the AAROGYA SETU app of Govt.
- Avoid SHAKE HANDS and HUGGING.
- All are required to WORK WITHIN ALLOCATED AREA only.
- NO SOCIALIZING WITH OTHER WORK GROUPS and social distancing norms to be strictly followed.
- It is YOUR PRIMARY RESPONSIBILITY to educate & motivate each and every colleague of yours working in the Yard to wear face mask and practice social distancing & hand hygiene norms.
- For further clarifications, contact
Chief Medical Officer, Cochin shipyard, Mobile: 8129270923



Cochin Shipyard Limited

COVID-19

WORKING PROTOCOL ON BOARD THE SHIP

At Entrance



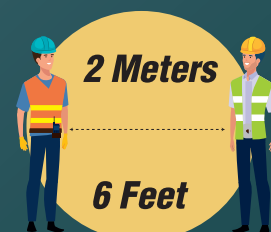
| Use of mask is mandatory

Wash your hands at gangway |



While Working

Always maintain social distancing |



| Hand sanitizers strictly prohibited in the work areas

No meeting/gathering inside the ship |



At Exit



| Wash your hands

General Compliance/Instructions

- Social distancing norm to be followed while entry and exit.
- While sneezing or coughing use a tissue or cover your face with your elbow.
- The mask and gloves to be disposed in the specified bins.
- Gangway handrails to be sanitized regular intervals.
- All are required to work within the allotted area only.
- No socializing with other work groups.
- For further suggestions/feedback, contact
Chief Medical Officer, Cochin shipyard, Mobile: 8129270923

दूसरों को बीमार होने से बचाएं PROTECT OTHERS FROM GETTING SICK

खांसते या छींकते समय मुँह और नाक को टिश्यू
कपड़े या बाजू से ढके

COVER MOUTH AND NOSE WITH TISSUE, SLEEVE
OR ELBOW WHEN COUGHING OR SNEEZING



उपयोग के बाद टिश्यू को बंद डिब्बे में फेंक दें
THROW TISSUE INTO CLOSED BIN AFTER USE

खांसने या छींकने और बीमार लोगों की देखभाल करने के
बाद हाथ साफ करें

CLEAN HANDS AFTER COUGHING OR SNEEZING
AND WHEN CARING FOR THE SICK



अपने हाथों को धोएं WASH YOUR HANDS



अपने हाथ स्पष्ट रूप से गंदे होने पर उसे साबुन और बहते पानी से धोएं,
WASH YOUR HANDS WITH SOAP AND RUNNING WATER
WHEN HANDS ARE VISIBLY DIRTY

यदि आपके हाथ स्पष्ट रूप से गंदे नहीं हैं, तो उन्हें साबुन और पानी से
धोएं या अल्कोहल युक्त हैंड क्लेसर् (Hand Cleanser) का इस्तेमाल करें

IF YOUR HANDS ARE NOT VISIBLY DIRTY, WASH THEM WITH
SOAP AND WATER OR USE AN ALCOHOL-BASED HAND CLEANSER



यात्रा के दौरान स्वस्थ रहें STAY HEALTHY WHILE TRAVELLING

बुखार और खांसी से पीड़ित लोगों के संपर्क से बचें
AVOID CLOSE CONTACT WITH PEOPLE SUFFERING FROM
A FEVER AND COUGH



अल्कोहल युक्त हैंड रब या साबुन और पानी से
बार-बार हाथ धोएं
FREQUENTLY CLEAN HANDS BY USING ALCOHOL BASED
HAND RUB OR SOAP AND WATER



आँख, नाक और मुँह को छूने से बचें
AVOID TOUCHING EYES, NOSE OR MOUTH



यात्रा के दौरान स्वस्थ रहें STAY HEALTHY WHILE TRAVELLING

यदि आप यात्रा के दौरान बीमार हो जाते हैं, तो पायलट टिम (Crew) को सूचित करें
और शीघ्र ही चिकित्सा प्राप्त करें



IF YOU BECOME SICK WHILE TRAVELLING,
INFORM CREW AND SEEK MEDICAL CARE EARLY



अगर आपको चिकित्सा की आवश्यकता है तो, अपने स्वास्थ्य सेवा प्रदाता के साथ
यात्रा विवरण साझा करें

IF YOU SEEK MEDICAL ATTENTION,
SHARE TRAVEL HISTORY WITH YOUR HEALTH CARE PROVIDER

